

## Digital Cabinets Roll-in Refrigerator 930 lt - 1 door - remote

ITEM # \_\_\_\_\_

MODEL # \_\_\_\_\_

NAME # \_\_\_\_\_

SIS # \_\_\_\_\_

AIA # \_\_\_\_\_



725104 (R1093RE1FR)

1-door Roll-in Refrigerator  
930lt, 0/+10°C, AISI 304,  
remote

### Short Form Specification

**Item No.** \_\_\_\_\_

External and internal in AISI 304 stainless steel. Insulation thickness mm60. Right hinged full door with lock. Bottom door gasket adjustable. Remote refrigeration unit; ventilated operating mode. Digital control panel; temperature display; humidity control; hidden evaporator; automatic defrost. Smart Electronic Control: HACCP incorporated; temperature and humidity of food stored can be set by pushing a button. Operating temperature 0/+10° C. For ambient temperatures up to 43°C-

### Main Features

- Ventilated cooling for optimal temperature distribution.
- Lift-up control panel to better access main components.
- Digital control panel with temperature display.
- Connectivity ready for real time access to connected appliances from remote and data monitoring (requires optional accessory).
- Large digital white-digit display with humidity selection button (3 preset level), internal temperature display and setting, manual activation of defrost cycle and turbo frost cycle (to rapidly cool warm loads).
- The operating temperature can be adjusted from 0 to +10 °C to suit both meat and dairy storage requirements.
- Automatic defrost and automatic evaporation of defrost water.
- One full door.
- Complies with main international certification bodies and is CE marked.
- Inner side protectors to protect the internal walls.
- Adjustable bottom door gasket.
- Simple cooling unit easily accessible from the rear of the appliance.
- Tropicalized unit.

APPROVAL: \_\_\_\_\_

## Construction

- Evaporator and fan are placed outside the cell to provide the maximum storage capacity.
- Lockable door.
- Evaporator cover is easily removable for service.
- Developed and produced in ISO 9001 and ISO 14001 certified factory.
- Remote compressor to suit operating conditions.
- Electrical connection: 220-240V-single phase 50HZ or 220-240V-single phase 60HZ.
- Interior cell and external panel are constructed in 304 AISI stainless steel.
- External panels are in AISI 304 stainless steel for higher level of hygiene.

## Sustainability

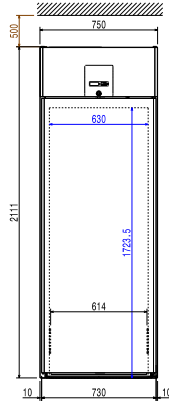


- Finished in top quality materials to ensure durability.
- CFC and HCFC-free insulation.
- Cabinet fitted with up to 60 mm thickness of Cyclopentane insulation for best insulating performance (thermal conductivity: 0,020 W/m\*K). CFC and HCFC-free insulation.

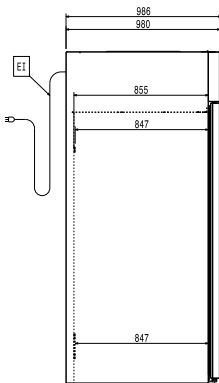
## Optional Accessories

- Insulated floor-ramp for 930lt Roll-in Refrigerator PNC 881280
- Trolley with tray rack, 20 GN 1/1, 63mm pitch PNC 922753
- Trolley with tray rack, 16 GN 1/1, 80mm pitch PNC 922754
- Bakery/pastry trolley with rack holding 600x400mm grids for 20 GN 1/1 oven and blast chiller freezer, 80mm pitch (16 runners) PNC 922761

Front

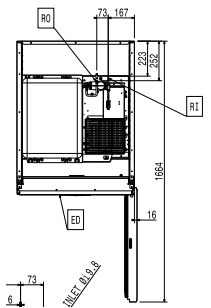


Side



EI = Electrical inlet (power)  
 RI = Refrigerant Inlet  
 RO = Refrigerant Outlet

Top



### Electric

#### Supply voltage:

725104 (R1093RE1FR) 220-240 V/1 ph/50-60 Hz

### Key Information:

Door hinges:	Left Side
External dimensions, Width:	750 mm
External dimensions, Depth:	986 mm
External dimensions, Height:	2111 mm
Number and type of doors:	1 Full
External side panels:	304 AISI
External top panels:	Galvanized Steel
External door material:	304 AISI
Internal panels material:	304 AISI

### Refrigeration Data

Control type:	Electronic
Operating temperature max.:	10 °C
Refrigeration type:	R134a;R513A;R426A
Suggested refrigeration power:	605 W
Condition at evaporation temperature:	-10 °C
Condition at condensation temperature:	55 °C
Condition at ambient temperature:	32 °C
Connection pipes (remote) - outlet:	9.8 mm
Connection pipes (remote) - inlet:	6 mm

### ISO Certificates

ISO Standards: ISO 9001; ISO 14001; ISO 45001; ISO 50001